



CHANDLER-GILBERT COMMUNITY COLLEGE

*fast facts 2010*



The college of you.  
An EEO/AA institution

78-0

# Contents

## ENROLLMENT

College Enrollment, All Locations .....	2
Williams Campus Enrollment .....	3
Dual Enrollment .....	4

## STUDENT DEMOGRAPHICS

Part-Time/Full-time .....	4
Gender .....	5
Ethnicity .....	5
New, Former or Continuing .....	5
Age .....	6
International Students .....	7
Term-to-Term Persistence .....	7
Day and Evening Attendance .....	8
Student Residence .....	8-9
Class Size and Faculty/Student Ratio .....	10
Financial Aid .....	10
High School .....	11

## STUDENT PERFORMANCE

Student Engagement .....	12
Student Retention and Success in Courses .....	12

## GRADUATES

Graduates .....	13
-----------------	----

## TRANSFER STUDENTS

Transfer Students .....	14
-------------------------	----

## EMPLOYEES

Full-Time Employees by Policy Group .....	15
Comparison of % Employees, Students & Community by Ethnicity .....	15
Adjunct Faculty Employees .....	15

## FACILITIES

Total Number of Buildings, Gross Square Feet, and Acres of Land .....	16
Pecos Campus Buildings .....	16
Pecos Campus Land .....	16
Sun Lakes Center .....	16
Williams Campus .....	17

## ADOPTED BUDGET

Annual Budgets FY 2009-10 and FY 2008-09 .....	18
General Fund, Expenditures by Function .....	18
General Fund, Expenditures by Object .....	18
Financial Comparisons to National Benchmarks .....	19

## COMMUNITY

Population .....	20
East Valley Demographics .....	21

# ENROLLMENT

## College Enrollment

### All Locations

\* The FY FTSE for FY09-10 is unaudited. The audit will not be complete until September 2010.

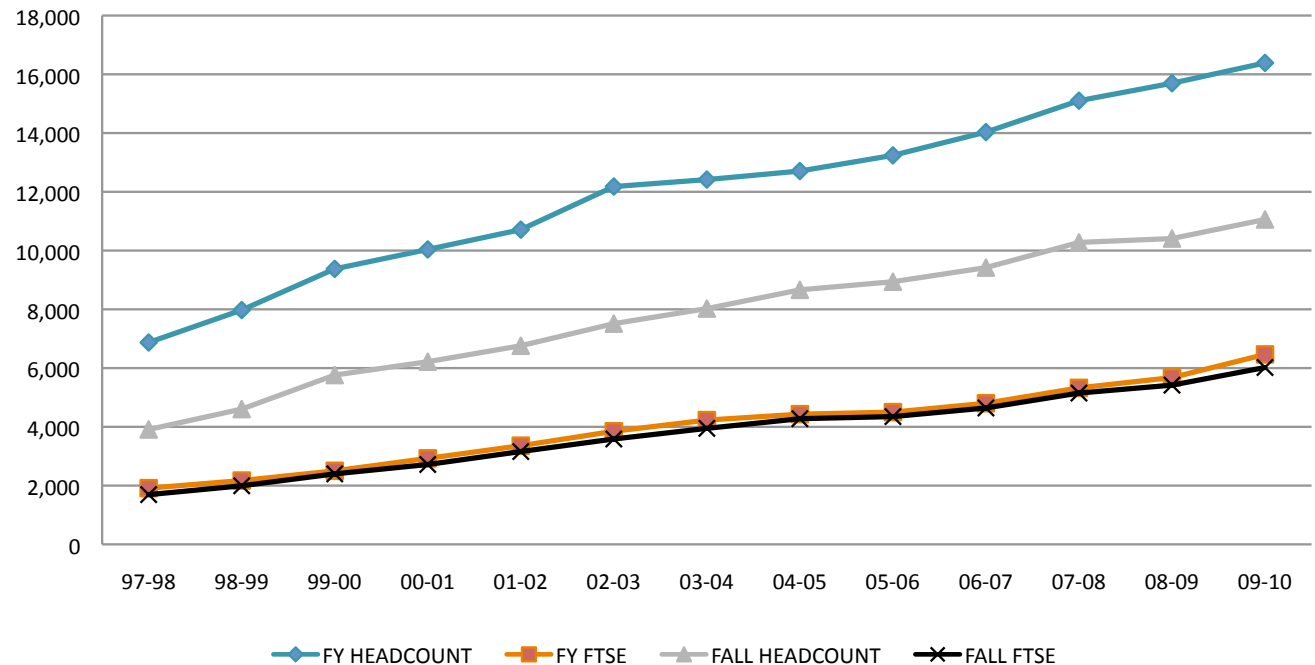
Source: Maricopa Trends

#### FTSE Definition:

State law defines FTSE. 30 credit hours = 1 Fiscal Year FTSE. Since a student does not take 30 credits in a single semester, Fall and Spring FTSE is reported as credit hours divided by 15. However, in the final yearly calculations, Fall and Spring FTSE is added together and divided by 2 (averaged) so it equals 30 credit hours to 1 FTSE. Fiscal year FTSE includes all FTSE -- Fall, Spring, Summer, Short-Term, and Open-Entry / Open-Exit.

FISCAL YEAR	97-98	98-99	99-00	00-01	01-02	02-03	03-04	04-05	05-06	06-07	07-08	08-09	09-10
FY HEADCOUNT	6,872	7,975	9,377	10,038	10,712	12,179	12,416	12,707	13,240	14,033	15,101	15,696	16,388
% HEADCOUNT CHANGE	12.4%	16.1%	17.6%	7.0%	6.7%	13.7%	1.9%	2.3%	4.2%	6.0%	7.6%	3.9%	4.4%
FY FTSE	1,913.1	2,172.0	2,503.0	2,927.1	3,358.2	3,848.8	4,229.9	4,431.6	4,501.0	4,802.7	5,326.1	5,677.0	*6,465.0
% FTSE CHANGE	9.9%	13.5%	15.2%	16.9%	14.7%	14.6%	9.9%	4.8%	1.6%	6.7%	10.9%	6.6%	*13.9%

FALL TERMS	1997	1998	1999	2000	2001	2002	2003	2004	2005	2006	2007	2008	2009
FALL HEADCOUNT	3,910	4,604	5,762	6,217	6,760	7,513	8,025	8,663	8,940	9,420	10,277	10,409	11,058
% HEADCOUNT CHANGE	10.8%	17.7%	25.2%	7.9%	8.7%	11.1%	6.8%	8.0%	3.2%	5.4%	9.1%	1.3%	6.2%
FALL FTSE	1,693.1	1,993.5	2,399.3	2,718.3	3,159.3	3,586.6	3,948.5	4,277.5	4,348.7	4,642.6	5,150.2	5,419.9	6,020.1
% FTSE CHANGE	6.8%	17.7%	20.4%	13.3%	16.2%	13.5%	10.1%	8.3%	1.7%	6.8%	10.9%	5.2%	11.1%



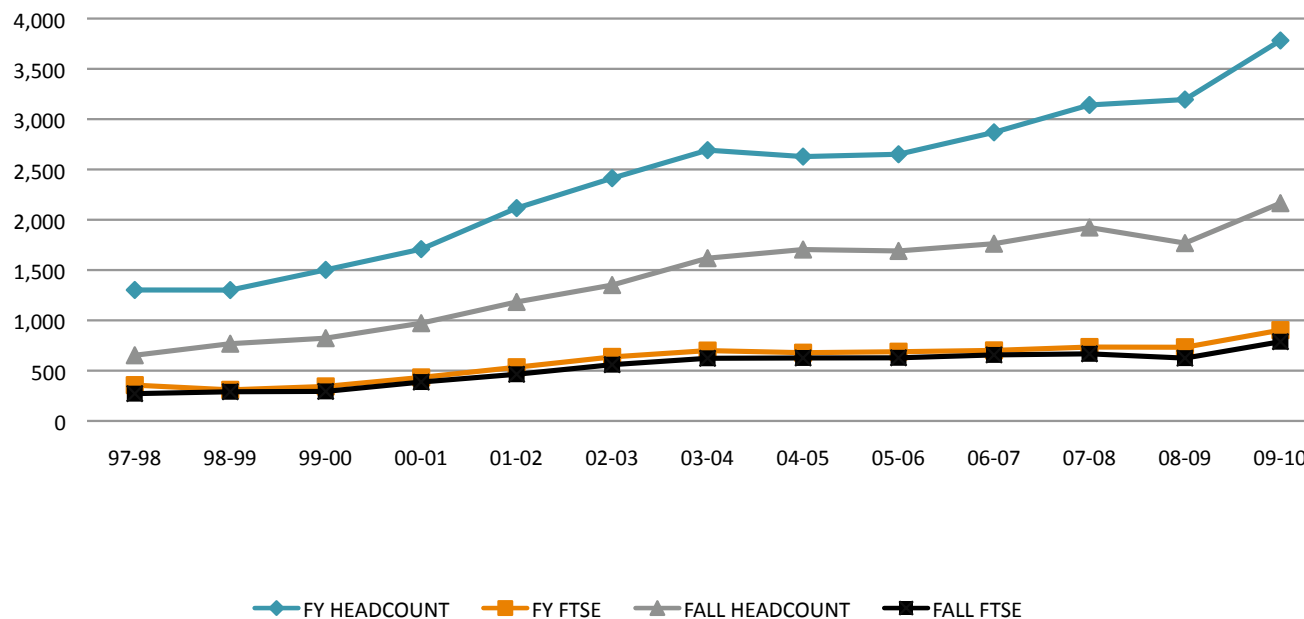
# Williams Campus

## Enrollment

Source: Maricopa Data Warehouse.

FISCAL YEAR	97-98	98-99	99-00	00-01	01-02	02-03	03-04	04-05	05-06	06-07	07-08	08-09	09-10
FY HEADCOUNT	1,302	1,301	1,502	1,708	2,116	2,413	2,692	2,628	2,651	2,869	3,141	3,195	3,782
% HEADCOUNT CHANGE	90.1%	-0.1%	15.4%	13.7%	23.9%	14.0%	11.6%	-2.4%	0.9%	8.2%	9.5%	1.7%	18.4%
FY FTSE	356.1	309.3	343.3	432.8	534.0	636.5	699.4	678.4	688.2	701.4	734.7	732.6	902.7
% FTSE CHANGE	133.0%	-13.1%	11.0%	26.1%	23.4%	19.2%	9.9%	-3.0%	1.4%	1.9%	4.7%	-0.3%	23.2%

FALL TERMS	1997	1998	1999	2000	2001	2002	2003	2004	2005	2006	2007	2008	2009
FALL HEADCOUNT	653	768	823	972	1,183	1,351	1,618	1,704	1,690	1,762	1,923	1,768	2,165
% HEADCOUNT CHANGE	2411.5%	17.6%	7.2%	18.1%	21.7%	14.2%	19.8%	5.3%	-1.8%	4.3%	9.1%	-8.1%	22.5%
FALL FTSE	271.5	290.2	293.8	386.8	464.1	559.5	623.0	626.1	627.7	656.4	667.3	624.6	787.7
% FTSE CHANGE	3834.8%	6.9%	1.2%	31.7%	20.0%	20.6%	11.3%	0.5%	0.3%	4.6%	1.7%	-6.4%	26.1%



# STUDENT DEMOGRAPHICS

## Dual Enrollment

Dual enrollment began in 1998. For dual enrollment, 96% of enrollments are in mathematics and science -- 76% in math and 20% in science. Accounting, art, business, management, and history make up the rest of the enrollments. For more information about dual enrollment see: <http://www.maricopa.edu/business/ir/reports.php>

Source: Maricopa Data Warehouse & Official Dual Enrollment Reports

	FALL 1999	FALL 2000	FALL 2001	FALL 2002	FALL 2003	FALL 2004	FALL 2005	FALL 2006	FALL 2007	FALL 2008	FALL 2009
HEADCOUNT	773	644	786	797	843	1,193	1,168	1,388	1,399	1,330	1,049
% TOTAL COLLEGE HEADCOUNT	13.4%	10.4%	11.6%	10.6%	10.5%	13.8%	13.1%	14.7%	13.6%	12.8%	9.5%
FTSE	235.9	208.1	270.9	270.8	286.6	393.7	384.5	467.2	489.3	458.5	357.8
CHANGE FROM PREVIOUS YEAR	133.0%	-11.8%	30.2%	< -0.1%	5.8%	37.4%	-2.3%	21.5%	4.7%	-6.3%	-22.0%
% TOTAL COLLEGE FTSE	9.8%	7.7%	8.6%	7.6%	7.3%	9.2%	8.8%	10.1%	9.5%	8.5%	5.9%

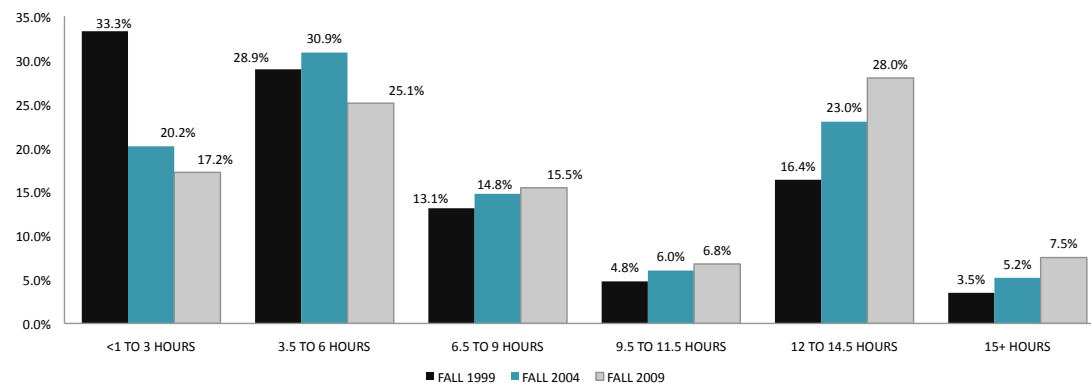
## Part-Time / Full-time

Source: Maricopa Trends

	FALL 1999	FALL 2004	FALL 2009
FULL-TIME	19.9%	28.2%	35.5%
PART-TIME	80.1%	71.8%	64.5%

NUMBER OF STUDENTS	FALL 1999	FALL 2004	FALL 2009
<1 TO 3 HOURS	1,918	1,748	1,903
3.5 TO 6 HOURS	1,668	2,673	2,775
6.5 TO 9 HOURS	756	1,279	1,709
9.5 TO 11.5 HOURS	276	522	749
12 TO 14.5 HOURS	943	1,991	3,092
15+ HOURS	201	450	830
TOTAL	5,762	8,663	11,058

PERCENTAGE OF STUDENTS	FALL 1999	FALL 2004	FALL 2009
<1 TO 3 HOURS	33.3%	20.2%	17.2%
3.5 TO 6 HOURS	28.9%	30.9%	25.1%
6.5 TO 9 HOURS	13.1%	14.8%	15.5%
9.5 TO 11.5 HOURS	4.8%	6.0%	6.8%
12 TO 14.5 HOURS	16.4%	23.0%	28.0%
15+ HOURS	3.5%	5.2%	7.5%
TOTAL	100.0%	100.0%	100.0%



Source: Maricopa Data Warehouse

## Gender

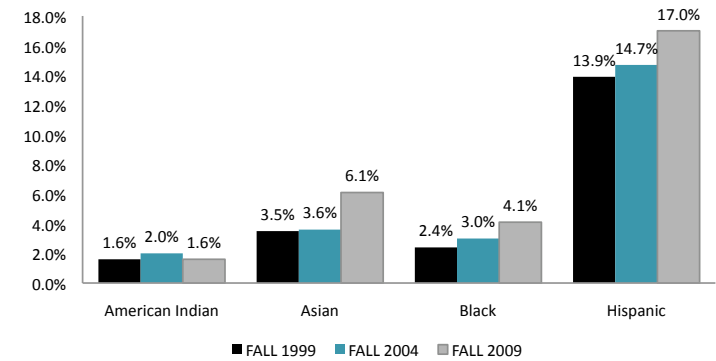
Source: Maricopa Trends

	FALL 1999	FALL 2004	FALL 2009
MALE	46.7%	43.0%	46.2%
FEMALE	49.0%	53.1%	52.1%
UNDECLARED	4.3%	3.9%	1.7%

## Ethnicity

Source: Maricopa Trends

	FALL 1999	FALL 2004	FALL 2009
AMERICAN INDIAN	1.6%	2.0%	1.6%
ASIAN	3.5%	3.6%	6.1%
BLACK	2.4%	3.0%	4.1%
HISPANIC	13.9%	14.7%	17.0%
WHITE	69.5%	67.3%	61.7%
OTHER	9.1%	9.4%	9.5%



## New, Former or Continuing

Source: Maricopa Trends

	FALL 1999	FALL 2004	FALL 2009
NEW	53.2%	47.3%	44.9%
FORMER	10.0%	13.9%	14.3%
CONTINUING	36.8%	38.7%	40.8%

### Definitions

The Student Information System generates this code.

**New Students:** Student attended CGCC for the first time in the fall or the previous summer.

**Former Students:** Student attended CGCC the previous fall term or any term before that.

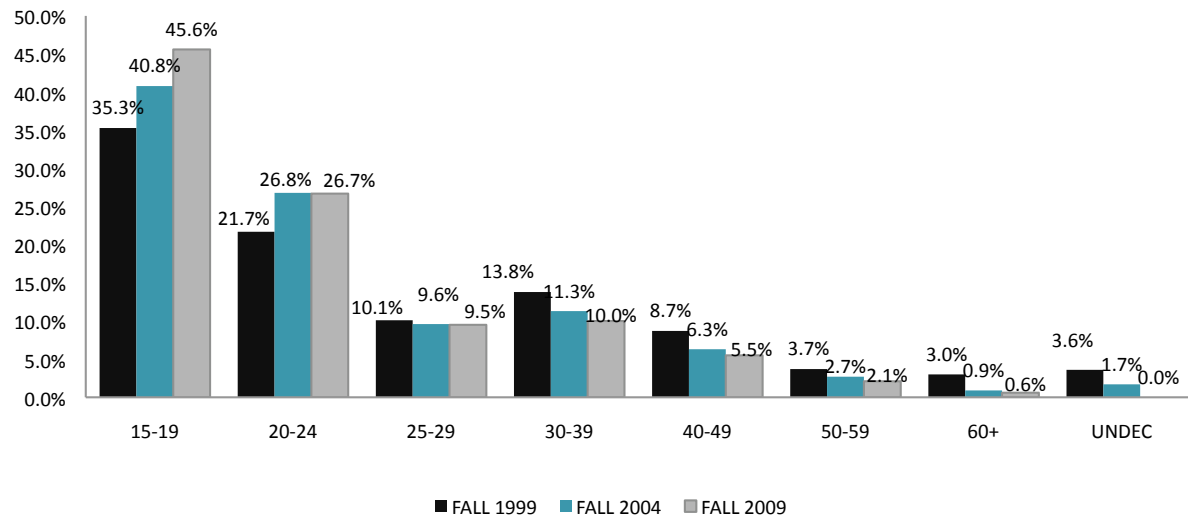
**Continuing Students:** Student attended CGCC the previous spring term.

# STUDENT DEMOGRAPHICS

## Age

Source: Maricopa

	FALL 1999	FALL 2004	FALL 2009
15-19	35.3%	40.8%	45.6%
20-24	21.7%	26.8%	26.7%
25-29	10.1%	9.6%	9.5%
30-39	13.8%	11.3%	10.0%
40-49	8.7%	6.3%	5.5%
50-59	3.7%	2.7%	2.1%
60+	3.0%	0.9%	0.6%
UNDECLARED	3.6%	1.7%	<0.1%



Source: National Community College Benchmarking Project (NCCBP), 2009.

**Median Age:** 19

**National Percentile:** 5%  
Students at 95% of Community Colleges are older.

## International Students

**Note:**  
Other Visas include diplomatic, exchange visitor, temporary visitors for business, pleasure or special occupation; employment authorization; finance, treaty or investment traders; and the dependents for any of the foregoing.

Source: Maricopa Warehouse

CHANDLER-GILBERT COMMUNITY COLLEGE - STUDENTS BY CITIZENSHIP STATUS								
	FALL TERMS							
	2002	2003	2004	2005	2006	2007	2008	2009
F1-STUDENT VISA	18	13	14	30	36	45	55	43
F2-STUDENT SPOUSE VISA	2	3	4	4	0	4	1	2
OTHER VISAS	20	21	17	23	44	62	50	54
SUBTOTAL	40	37	35	57	80	111	106	99
% STUDENTS WITH VISAS	0.5%	0.5%	0.4%	0.6%	0.8%	1.1%	1.0%	0.9%
IMMIGRANT	306	342	365	395	430	447	430	484
REFUGEE	6	7	5	5	8	9	8	7
SUBTOTAL	312	349	370	400	438	456	438	491
% IMMIGRANT & REFUGEE	4.2%	4.3%	4.3%	4.5%	4.6%	4.4%	4.2%	4.4%
ALL INTERNATIONAL STUDENTS	352	386	405	457	518	567	544	590
% INTERNATIONAL STUDENTS	4.7%	4.8%	4.7%	5.1%	5.5%	5.5%	5.2%	5.3%

## Term-to-Term Persistence

Source: National Community College Benchmarking Project (NCCBP), 2009.

**Fall to Spring: 60%**

**National Percentile: 17%**

This is the percent of students who were enrolled in the fall who re-enrolled in the spring term. The national percentile indicates that 83% of community colleges have a higher fall to spring persistence rate.

**Fall to Fall: 38%**

**National Percentile: 8%**

This is the percent of students who enrolled in fall and who returned the next fall term. The national percentile indicates that 92% of community colleges have a higher fall to fall persistence rate.

# STUDENT DEMOGRAPHICS

## Primary Time of Attendance

In Fall 2008, the Day/Evening breakout was changed to Primary Time of Attendance. This reflects when students take most of their classes. The addition of weekend and non-traditional categories better reflect current attendance patterns.

Evening begins at 4:30 P.M.

*Source: Maricopa Trends*

PRIMARY TIME OF ATTENDANCE	FALL 1999	FALL 2004	FALL 2008	FALL 2009
DAY	64.1%	70.0%	58.3%	61.1%
EVENING	35.9%	30.0%	20.3%	20.0%
WEEKEND	N/A	N/A	3.0%	3.5%
NON-TRADITIONAL	N/A	N/A	18.1%	15.3%
UNKNOWN	N/A	N/A	0.2%	2.0%

## Student Residence

Between Fall 2001 and Fall 2009, 92% to 94% of CGCC students came from an expanded East Valley. The percent of students coming from CGCC's Core Area -- Chandler, Gilbert, Queen Creek, and the Mesa zip codes along and south of US 60 -- increased from 72% to 84%.

## Student Residence

### Students by East Valley, CGCC Core Area & City

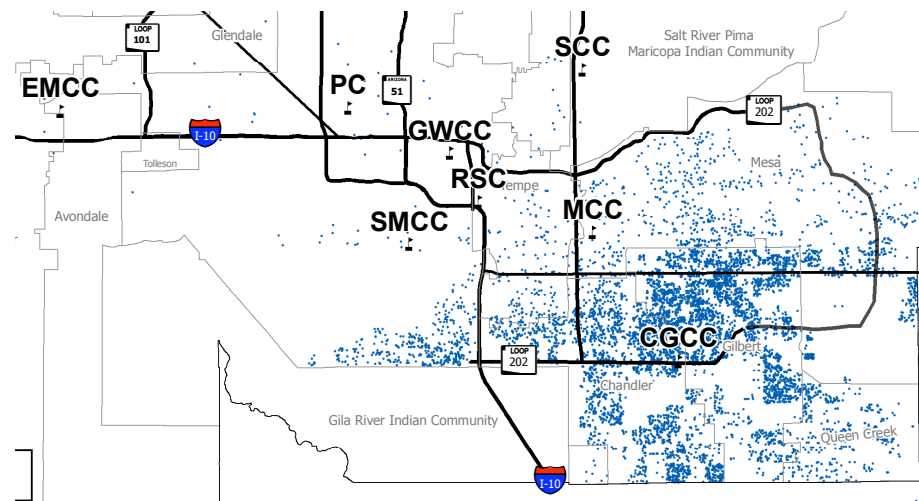
**Note:** In rapidly growing areas zip codes change frequently. The data were pulled using city name. To obtain population figures for Ahwatukee and Mesa along and south of US 60, zip codes were used.

FALL 45TH DAY									
EAST VALLEY BY CITY	2001	2002	2003	2004	2005	2006	2007	2008	2009
AHWATUKEE	138	132	143	157	185	250	326	374	478
APACHE JUNCTION	86	59	73	70	68	61	77	48	49
CHANDLER	2,223	2,460	2,496	2,830	2,890	3,031	3,183	3,150	3,272
GILBERT	2,183	2,547	2,744	3,012	3,001	3,153	3,524	3,786	3,977
MESA	1,241	1,316	1,386	1,344	1,257	1,233	1,283	1,200	1,340
QUEEN CREEK	261	256	335	423	656	767	915	1,044	1,062
TEMPE	195	223	214	194	163	174	191	221	245
TOTAL	6,327	6,993	7,391	8,030	8,220	8,669	9,499	9,823	10,423
% OF ALL STUDENTS	93.6%	93.1%	92.1%	92.7%	91.9%	92.0%	92.4%	94.4%	94.3%
CORE AREA									
CHANDLER, GILBERT, QUEEN CREEK & MESA S OF US60	4,896	5,577	5,929	6,631	6,909	7,375	8,015	8,835	9,327
% OF ALL STUDENTS	72.4%	74.2%	73.9%	76.5%	77.3%	78.3%	78.0%	84.9%	84.3%
ALL 45TH DAY STUDENTS	6,760	7,513	8,025	8,663	8,940	9,420	10,277	10,409	11,058

Source: Maricopa Data Warehouse

### Fall 2009 CGCC Students

The chart displays data for each city, CGCC's Core Area, and the East Valley including Ahwatukee and Apache Junction. The dot density map plots student residence.



Source: Maricopa Data Warehouse



## High School

Students who graduated from high school in 2009 and attended CGCC in Fall 2009.

	NUMBER	%
EAST VALLEY	1,669	87.7%
ALL OTHER AZ HS	121	6.4%
OUT-OF-STATE & US POS	55	2.9%
FOREIGN	13	0.7%
UNKNOWN	46	2.4%
TOTAL	1,904	100.0%

2009 EAST VALLEY HIGH SCHOOL GRADUATES AT CGCC FALL 2009 (BY SCHOOL DISTRICT)			
<b>CHANDLER</b>			
BASHA	204		
CHANDLER	123		
HAMILTON	164		
PERRY	1		
SUBTOTAL	492		
<b>GILBERT</b>			
DESERT RIDGE	50		
GILBERT	175		
HIGHLAND	126		
MESQUITE	176		
TECH & LEADERSHIP ACADEMY	2		
SUBTOTAL	529		
<b>MESA</b>			
DOBSON	25		
MESA	35		
MOUNTAIN VIEW	21		
RED MOUNTAIN	18		
SKYLINE	19		
WESTWOOD	5		
SUBTOTAL	123		
<b>TEMPE</b>			
CORONA DEL SOL	73		
DESERT VISTA	86		
MARCOS DE NIZA, AHWATUKEE	6		
MCCLINTOCK	3		
MT. POINT, AHWATUKEE	47		
TEMPE UNION	0		
SUBTOTAL	215		
<b>CHARTERS &amp; PRIVATE</b>			
		75	
<b>APACHE JUNCTION</b>			
		4	
<b>HIGLEY</b>			
HIGLEY	152		
WILLIAMS FIELD	4		
SUBTOTAL	156		
<b>QUEEN CREEK</b>			
QUEEN CREEK	73		
SAN TAN FOOTHILLS	2		
SUBTOTAL	75		

Source: Maricopa Data Warehouse

# STUDENT PERFORMANCE

## Student Engagement

### Community College Survey of Student Engagement, 2009

**Note:**

CCSSE was conducted in Spring 2009. CCSSE recently recalculated its percentiles with the addition of data from 2010. The next CCSSE administration is scheduled for Spring 2011.

Source: *Community College Survey of Student Engagement (CCSSE), 2009.*

## Student Success in Courses

Source: *National Community College Benchmarking Project (NCCBP), 2009.*

### What do these numbers mean?

Each of the **benchmarks** is described below. How are the benchmarks created? For each benchmark there are a set of related questions. For example, for **Student Effort** questions ask students if they prepared two or more drafts of a paper, came to class unprepared, how much they read both for classes and for personal enrichment, etc. The responses are combined to create a score for each college. From the raw scores, percentiles are computed so colleges can compare themselves to other community colleges. To allow community colleges to compare themselves to like institutions, percentiles are further broken down by **ALL COLLEGES** – all CCSSE participants, **LARGE COLLEGES** – colleges with a fall headcount enrollment of 7,500 or more, and **URBAN COLLEGES** – colleges in large metropolitan areas.

CGCC COMPARED TO	ALL COLLEGES	LARGE COLLEGES	URBAN COLLEGES
ACTIVE & COLLABORATIVE LEARNING	80-90%	90-99%	80-90%
STUDENT EFFORT	20-30%	30-40%	20-30%
ACADEMIC CHALLENGE	10-20%	10-20%	10-20%
STUDENT-FACULTY INTERACTION	20-30%	20-30%	20-30%
SUPPORT FOR LEARNERS	< 10%	<10%	<10%

For example, **Active and Collaborative Learning** assesses how actively students are involved in their education; their opportunities to think and apply what they learn in different settings; and if they collaborate with others to solve problems or master challenging content. CGCC excels in this area. Compared to other Large Colleges, CGCC is between the 90th to 99th percentiles, or at least 90% of large community colleges have lower scores. For Urban Colleges and All Colleges, the percentile ranking is between the 80th to 90th percentiles, or at least 80% of colleges have scores lower than CGCC.

#### Student Effort:

Assesses the extent to which students apply themselves and engage in activities important to their academic success.

#### Academic Challenge:

Assesses the nature and amount of assigned academic work; the complexity of cognitive tasks; and the standards faculty use to evaluate students.

#### Faculty-Student Interaction:

Assesses the extent of faculty-student interaction both in and out of the classroom.

#### Support for Learners:

Assesses the extent of student use of key academic and student support services such as advising, career planning, tutoring center, and financial aid.

**Success Rate: 74%**

The success rate is the number of students who received a grade of A, B, C, or P divided by all students who enrolled in courses numbered 100 and above. This means that 74% of the students received an A, B, C or P and 26% received grades of D, F, W or withdrawal failing.

**National Percentile: 52%**

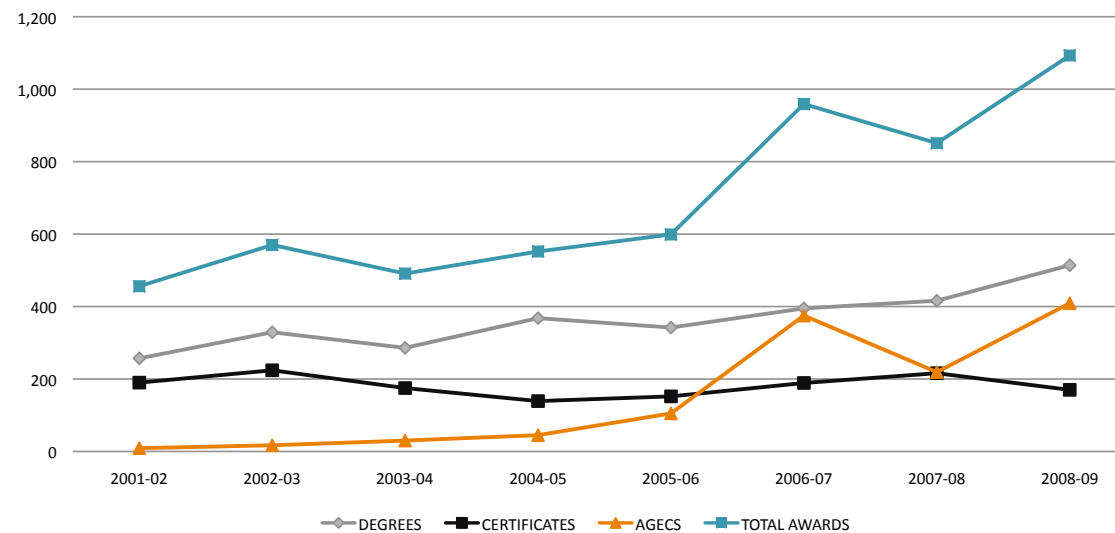
The national percentile indicates that 52% of community colleges have fewer students who receive grades of A, B, C, or P and more receiving a D, F, or withdrawal grade.

## Graduates

### Number of Degrees and Certificates Granted

	2001-02	2002-03	2003-04	2004-05	2005-06	2006-07	2007-08	2008-09
DEGREES	257	329	286	368	342	395	416	514
CERTIFICATES	190	224	175	139	152	189	216	170
AGECS	9	17	30	45	105	375	219	409
TOTAL AWARDS	456	570	491	552	599	959	851	1,093

From 2001-02 to 2005-06 IPEDS did not record AGECS. The first year they are reported is 2006-07. Of the 375 reported in 2006-07, 80 are from a previous year. For 2006-07 the IPEDS numbers were revised; the numbers above are correct.



Sources: IPEDS, Respective Years & Maricopa Data Warehouse for AGECS.

Sources: IPEDS & National Community College Benchmarking Project (NCCBP), 2009.

### Percent of First-Time Degree Seeking Students Who Receive a Degree Within Three Years:

**CGCC Percentage: 18%**

**National Percentile: 48%**

This means that 52% of community colleges have a higher percentage of students graduating in three years. This is based on the IPEDS Student-Right-to-Know Cohort.

# TRANSFER STUDENTS

## Transfer Students

### Number of Former CGCC Students at ASU, NAU, & U of A by Year:

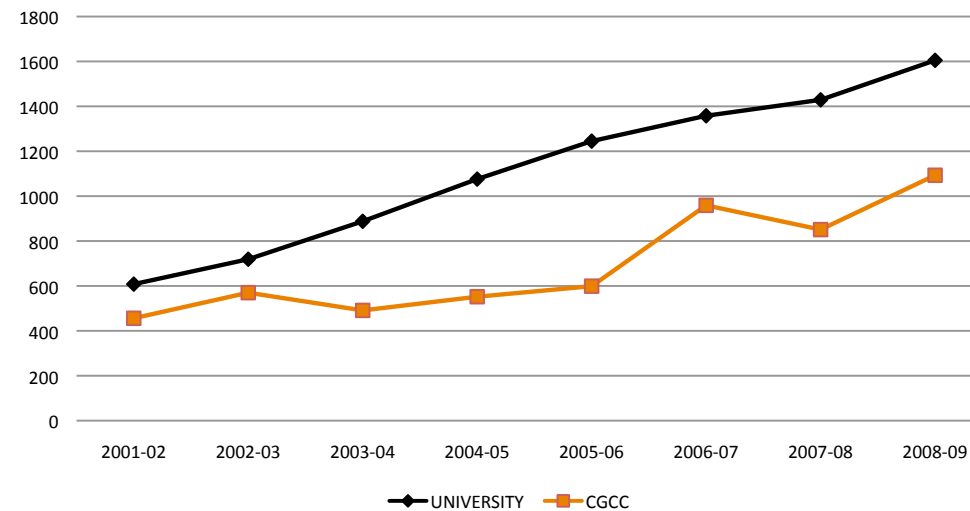
Source: For 2000-01 to 2006-07, Maricopa Decision Support System. For 2007-08 & 2008-09, ASSIST Data Base.

	TOTAL ATTENDING	NEW TRANSFERS	RECEIVING DEGREES
2000-01	2,273	668	495
2001-02	2,699	691	608
2002-03	3,308	902	719
2003-04	4,126	998	888
2004-05	4,625	1,316	1,076
2005-06	5,042	1,182	1,245
2006-07	5,256	1,176	1,358
2007-08	5,773	1,289	1,429
2008-09	6,257	1,517	1,605

Note: ASSIST uses a complicated algorithm to match students. Each year a number of students from previous years may be added to the data base.

### Compare Number of CGCC Graduates to Number of Former CGCC Students Receiving Degrees From Arizona Public Universities

Sources: CGCC Graduates -- IPEDS; University Graduates -- ASSIST Data Base.



### Performance After Transfer

Source: National Community College Benchmarking Project (NCCBP), 2009.

<b>GPA--First Year After Transfer:</b>	<b>3.00</b>	<b>National Percentile:</b>	<b>86%</b>
<b>Average Number Of Credits Completed:</b>	<b>20</b>	<b>National Percentile:</b>	<b>43%</b>
<b>Percent Enrolled in University For The Second Year:</b>	<b>88%</b>	<b>National Percentile:</b>	<b>91%</b>

Note: 85% of community colleges report transfer GPA's of less than 3.0; and 90% report a lower university second year enrollment rate. However, transfer students from 57% of community colleges complete more credit hours their first year at the university.

## Full-Time Employees

### by Policy Group

	NUMBER	%
FACULTY	121	40.2%
EXECUTIVE ADMINISTRATIVE MANAGERIAL	30	10.0%
TECHNICAL & PARAPROFESSIONAL	32	10.6%
OTHER PROFESSIONALS	19	6.3%
CLERICAL & SECRETARIAL	72	23.9%
SKILLED CRAFTS	3	1.0%
SERVICE MAINTENANCE	24	8.0%
TOTAL	301	100.0%

## Comparison of % Employees, Students & Community By Ethnicity, Fall 2008

	EMPLOYEES	STUDENTS	COMMUNITY
AM IND	1.3%	1.6%	0.7%
ASIAN	3.7%	6.1%	6.2%
BLACK	7.3%	4.1%	4.0%
HISPANIC	18.9%	17.0%	15.6%
WHITE	68.1%	61.7%	71.6%
OTHER	0.7%	9.5%	1.9%

## Adjunct Faculty

### Employees

Sources: Employee Data: IPEDS Human Resources 2009-10.  
Adjunct Faculty Data: Maricopa Data Warehouse  
Student Data: Maricopa Trends  
Community Trends: US Census 2005 for Chandler & Gilbert Combined.

Fall 2008 .....463  
TOTAL 2008-09 .....537

Source: National Community College Benchmarking Project (NCCBP), 2009

### National Percentile -- % of Minority Employees Compared to Community

**84%**

This benchmark compares the percent of minority employees to the percent of minorities in the population. It means that in 83% of community colleges the employees are less representative of the community.

# FACILITIES

## Total Number of Buildings, Gross Square Feet, and Acres of Land

	NUMBER BUILDINGS	SIZE (GSF)	TOTAL ACRES
PECOS CAMPUS	17	339,159	127.00
WILLIAMS CAMPUS	9	207,097	55.74
SUN LAKES CENTER	1	11,068	0.25
TOTAL	27	557,324	182.99

## Pecos Campus

### Buildings

PECOS CAMPUS BUILDINGS	SIZE (GSF)	YEAR CONST.	YEAR REMODELED
AGA - AGAVE HALL	29,310	1-1-1986	2000
BRD - BRADSHAW HALL	33,934	1-1-1986	2000
BA - BRADSHAW ANNEX	1,440		
PSB - PUBLIC SAFETY BUILDING	4,874	1-1-1986	
LIB - LIBRARY	60,670	1-1-1998	
CHO - CHOLLA HALL	41,707	1-1-1998	
SAG - SAGUARO HALL	20,510	1-1-1998	
EST - ESTRELLA HALL	17,012	1-1-1998	
FSB - FACILITIES SERVICES BUILDING	5,113	1-1-1998	
PAC - ARNETTE SCOTT WARD PERFORMING ARTS CENTER	31,652	6-2-2002	
SC - STUDENT CENTER	20,510	1-2-2003	
BKS - BOOKSTORE	2,400	1-1-2003	
ATB - ATHLETIC TRAINING BUILDING	1,668	7-1-2004	
GIL - GILA HALL	3,581	8-1-2006	
ACR - ATHLETIC CONCESSION/ RESTROOMS	790	8-1-2007	
JAC - JACARANDA HALL	3,990	8-1-2008	
JAV - JAVELINA HALL	3,991	9-1-2009	
IRN - IRONWOOD HALL	57,446	11-1-2009	
TOTAL	339,159		

GSF: Gross Square Feet

Source: CGCC Facilities Services

## Pecos Campus Land

PECOS CAMPUS ACREAGE	ACRES	YEAR PURCHASED
ORIGINAL PARCEL	79.32	1981
ATHLETICS PARCEL	37.11	1995
GILBERT ROAD ENTRANCE	2.89	2003
CITY RIGHT OF WAYS	-1.4	2006
CORNER LAND (PECOS GILBERT ROADS)	10	2009
TOTAL	127,000	

## Sun Lakes Center

SUN LAKES CENTER BUILDING	SIZE (GSF)	YEAR CONST.
FIRST FLOOR	5,000	Fall 1997
SECOND FLOOR & MAIN ENTRY/LOBBY	6,068	Sept. 2006
TOTAL	11,068	

## Williams Campus

### Buildings

WILLIAMS CAMPUS - NON-RESIDENTIAL				
BUILDING	MESA ADDRESSES	SIZE (GSF)	YEAR CONST.	YEAR REMODELED
THOM - THOMAS HALL	7051 E. TEXAS	10,930	1958	1996
PEC - PHYSICAL EDUCATION CENTER	7460 E. TEXAS	23,118	1968	1994
MSB - MORTUARY SCIENCE BUILDING	7440 E. TAHOE	6,383	1979	2000
BLUF - BLUFORD HALL	7360 E. TAHOE	92,866	1984	2000
EUTC - ELECTRIC UTILITY TECHNOLOGY CLASSROOM	7360 E. TAHOE	1,848	2006	
FACB - FACILITIES BUILDING	7360 E. TAHOE	3,024	1984	2009
HNGR - HANGAR	5733 S. SOSSAMAN	21,892	2008	
EGEL - ENGEL HALL	7418 E. TAHOE	28,659	2008	
BAYL - BAYLOR HALL COMPLEX	7465 & 7459 E. TILLMAN	18,377	1973 & 1985	2009
TOTAL		207,097		

WILLIAMS CAMPUS - RESIDENTIAL		
RESIDENCE HALLS	SIZE (GSF)	YEAR CONST.
5830 S. TWINNING (BLDG 324 / 40 BEDROOMS)	18,897	1968
5815 S. STERLING (BLDG 326 / 40 BEDROOMS)	18,897	1968
5829 S. TWINNING (BLDG 334 / 40 BEDROOMS)	18,107	1972
7303 E. TAHOE (BLDG 344 / 40 BEDROOMS)	18,107	1972
5816 S. AVERY (BLDG 354 / 40 BEDROOMS)	18,107	1972
TOTAL = 200 BEDROOMS	92,115	
HOMES		
7150-7263 E. TRENT OR E. THISTLE		
5706-5762 S. RAVEN, S. AMULET OR S. ROWEN		original construction in 1956
(ORIGINAL UNIT NUMBERS 9001-9045)		remodeled in 1970s
22 TWO BEDROOM, TWO BATH HOMES	24,640	1975
20 THREE BEDROOM, TWO BATH HOMES	27,200	1975
3 FIVE BEDROOM, TWO BATH HOMES	4,971	1975
TOTAL = 119 BEDROOMS	56,811	
NOTE: ALL HOUSING IS UNDER A 30-YEAR GROUND LEASE BEGINNING 3 /2001 AND IS MANAGED AND OPERATED BY A THIRD PARTY.		

Source: CGCC Facilities Services

# ADOPTED BUDGET

## Annual Budgets

FY 2010-11 and  
FY 2009-10

## General Fund

Expenditures by Function

## General Fund

Expenditures by Object

ANNUAL BUDGET SUMMARY				
ANNUAL BUDGETS	FY 2010-11	FY 2009-10	ANNUAL CHANGE AMOUNT	PERCENT
GENERAL FUND	\$42,679,029	\$37,943,534	\$4,735,495	12.5%
AUXILIARY FUND	\$4,112,836	\$2,512,269	\$1,600,567	63.7%
RESTRICTED FUND	\$15,315,665	\$7,888,770	\$7,426,895	94.1%
PLANT FUND	\$1,984,946	\$1,984,946	0	0.0%
TOTAL BUDGET	\$64,092,476	\$50,329,519	\$13,762,957	27.3%

GENERAL FUND BUDGETED EXPENDITURES BY FUNCTION				
	FY 2010-11	FY 2009-10	ANNUAL CHANGE	
			VARIANCE	PERCENT
INSTRUCTION	\$21,055,334	\$18,347,917	\$2,707,417	14.8%
ACADEMIC SUPPORT	\$4,703,523	\$4,751,331	\$(47,808)	-1.0%
ADMINISTRATION	\$2,352,763	\$2,308,276	\$44,487	1.9%
STUDENT SERVICES	\$4,202,602	\$4,029,864	\$172,738	4.3%
PHYSICAL PLANT	\$3,978,565	\$3,515,838	\$462,727	13.2%
GENERAL INSTITUTIONAL	\$5,642,964	\$4,681,182	\$961,782	20.5%
PUBLIC SERVICE	\$181,846	\$309,126	\$(127,280)	-41.2%
SCHOLARSHIP	\$561,432	0	\$561,432	
TOTAL BUDGET	\$42,679,029	\$37,943,534	\$4,735,495	12.5%

GENERAL FUND BUDGETED EXPENDITURES BY OBJECT				
	FY2010-11	FY2009-10	ANNUAL CHANGE	
			VARIANCE	PERCENT
SALARIES & WAGES	25,573,826	25,575,292	(1,466)	0.0%
EMPLOYEE BENEFITS	6,863,749	6,678,808	184,941	2.8%
CONTRACTUAL SERVICES	1,434,035	1,535,030	(100,995)	-6.6%
SUPPLIES & MATERIALS	977,896	1,021,738	(43,842)	-4.3%
FIXED CHARGES	461,078	381,793	79,285	20.8%
COMMUNICATION & UTILITIES	1,411,831	1,200,081	211,750	17.6%
TRAVEL	97,246	102,646	(5,400)	-5.3%
MISC & TRANSFERS	5,859,368	1,448,146	4,411,222	304.6%
TOTAL BUDGET	42,679,029	37,943,534	4,735,495	12.5%

Source: CGCC Adopted Budget  
FY 2009-10 & FY 2010-11

## Financial Comparisons to National Benchmarks

<b>% of Funds from Local Sources:</b>	<b>63.8%</b>	<b>National Percentile:</b>	<b>97%</b>
<b>% of Funds from State:</b>	<b>11.1%</b>	<b>National Percentile:</b>	<b>19%</b>
<b>% of Funds from Tuition:</b>	<b>25.1%</b>	<b>National Percentile:</b>	<b>28%</b>

The Maricopa Community Colleges are disproportionately funded from local property taxes compared to other community colleges in the United States. 96% receive a smaller percent of their revenue from local sources; 72% a larger percentage from tuition; and 81% a greater percent from state funds.

<b>Tuition:</b>	<b>\$71</b>	<b>National Percentile:</b>	<b>21%</b>
-----------------	-------------	-----------------------------	------------

Tuition is for 2009-10. The national percentile indicates that 79% of community colleges have higher tuition charges than Maricopa. Note that the tuition charged and the percent of an institution's budget from tuition are not the same,

<b>Cost Per Credit Hour:</b>	<b>\$100</b>	<b>National Percentile:</b>	<b>17%</b>
------------------------------	--------------	-----------------------------	------------

<b>Cost Per Student FTE:</b>	<b>\$3,003</b>	<b>National Percentile:</b>	<b>17%</b>
------------------------------	----------------	-----------------------------	------------

This indicates that 83% of community colleges have higher costs than Maricopa.

Source: National Community College Benchmarking Project (NCCBP), 2009.

# COMMUNITY

## Population

### CENSUS

The Census figures are from 1990, 2000, and the 2005 Special Census.

### POPULATION ESTIMATES

Population Statistics Unit of the Arizona Department of Commerce, 2006, 2007, & 2008. The population estimates are made in December-January for the previous July 1st. Prior to 2008, the Population Statistics Unit was part of the Research Administration of the Arizona Department of Economic Security.

### POPULATION PROJECTIONS

Maricopa Association of Governments. May 2007. Socioeconomic Projections of Population Housing and Employment by Municipal Planning Area and Regional Analysis Zone. MAG does the official population projections for Maricopa County.

### QUEEN CREEK

Includes the population in both Maricopa and Pinal Counties.

### CORE AREA

Chandler, Gilbert and Queen Creek

### CORE INCREASE & % INCREASE

This indicates the increase and percentage increase for the time period listed below.

For example, from 1990 to 2000 the population in the core area increased by 168,476 (from 122,388 to 290,864), or by 137.7%.

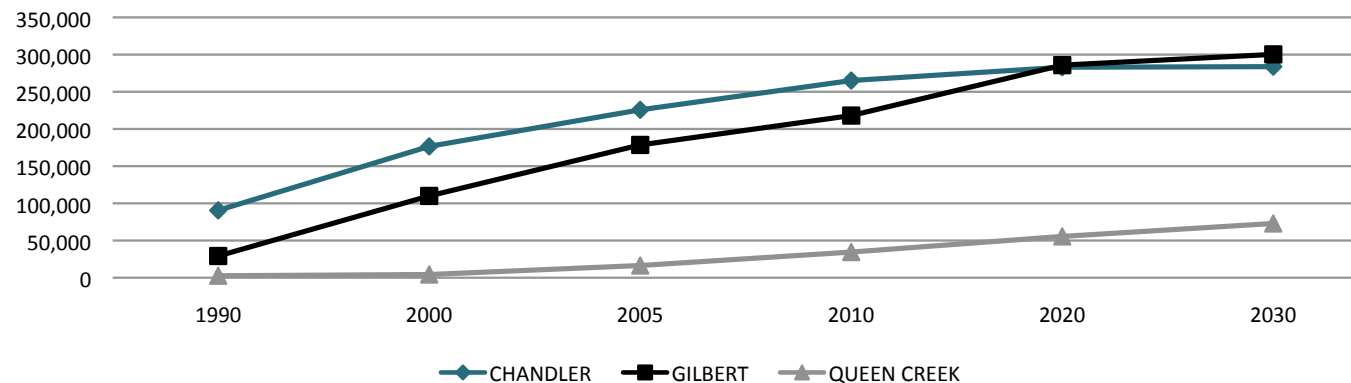
### POPULATION INCREASES

The population increases between 1990 and 2005 were: Maricopa County--69.2%; Chandler--149.3%; Gilbert--511.7%; Mesa--53.6%; Queen Creek--515.4%; Tempe--17.1%; and the CGCC Core Area--243.7%.

Source: Population US Census, 1990 and 2000; Special Census, 2005.

	CENSUS			POPULATION ESTIMATES			PROJECTED POPULATION		
	1990	2000	2005	2006	2007	2008	2010	2020	2030
MARICOPA COUNTY	2,122,101	3,072,149	3,590,804	3,972,675	3,907,492	3,987,942	4,216,499	5,230,300	6,135,000
CHANDLER	90,533	176,581	225,725	235,450	241,205	244,376	265,107	282,991	283,792
GILBERT	29,188	109,967	178,539	185,030	203,656	214,820	218,009	285,819	300,295
MESA	288,091	396,375	442,445	451,360	456,344	459,682	518,944	565,693	584,866
QUEEN CREEK	2,667	4,316	16,414	18,690	21,729	23,827	34,506	55,529	72,947
TEMPE	141,865	158,625	166,171	165,890	167,871	172,641	177,771	191,881	197,970
CORE AREA	122,388	290,864	420,678	439,170	466,590	483,023	517,622	624,339	657,034
INCREASE CORE	N/A	168,476	129,814	18,492	27,420	16,433	96,944	106,717	32,695
% INCREASE CORE	N/A	137.7%	44.6%	4.4%	6.2%	3.5%	23.0%	20.6%	5.2%

## PROJECTED POPULATION GROWTH



## East Valley Demographics

Sources: Special Census, 2005; Queen Creek not available for 2005.

**Note:** Unemployment rates change monthly and are calculated by the US Bureau of Labor Statistics. The local area rates report the data down to the city level. See the BLS website for additional reports. Note that both the methodology and resulting rates may differ from report to report.

	US	AZ	MARICOPA COUNTY	CHANDLER	GILBERT	MESA	TEMPE
WHITE	74.7%	76.2%	78.3%	76.0%	84.7%	81.6%	83.1%
HISPANIC	14.5%	28.6%	29.2%	18.3%	12.2%	24.0%	22.0%
BLACK	12.1%	3.1%	3.8%	4.9%	3.3%	2.4%	3.0%
AMERICAN INDIAN	0.8%	4.7%	1.9%	1.2%	0.4%	2.2%	2.3%
ASIAN	4.3%	2.2%	2.7%	6.9%	4.8%	2.0%	4.6%
NATIVE HAWAIIAN	0.1%	0.1%	0.1%	0.3%	0.1%	0.1%	0.0%

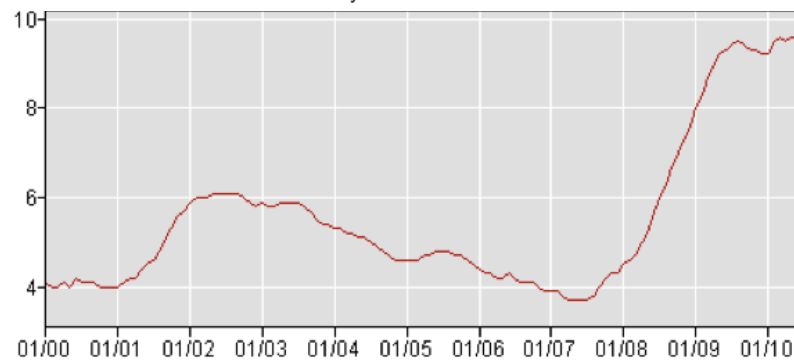
	EDUCATIONAL LEVEL	
	HS+	BA+
MARICOPA COUNTY	87%	27%
CHANDLER	89%	35%
GILBERT	95%	40%
MESA	85%	24%
QUEEN CREEK	79%	17%
TEMPE	90%	35%
SUN LAKES*	93%	29%

Sources: Educational Level: Percentages of Educational Attainment of Individuals 25 Years+, US Census 2005. For Queen Creek, 2005 data is not available, so 2000 figures are used in this chart.

	UNEMPLOYED	
	PERCENT	NUMBER
ARIZONA	9.7%	309,239
MARICOPA COUNTY	8.8%	175,239
PHOENIX-MESA-GLENDALE	9.0%	190,552
CHANDLER	6.8%	8,668
GILBERT	5.1%	5,802
MESA	8.1%	20,867
QUEEN CREEK	9.1%	258
TEMPE	7.7%	9,485

Source: Local Area Unemployment, U.S. Bureau of Labor Statistics. Published in: Arizona Workforce Informer: Arizona Unemployment Statistics Program: Special Unemployment Report, June 2010. See <http://www.workforce.az.gov/> See also: The Arizona Department of Commerce website

Arizona Unemployment Rates  
January 2000 to June 2010



Source: US Bureau of Labor Statistics. See: <http://www.bls.gov/lau/> Under "Latest Numbers" go to Arizona.

