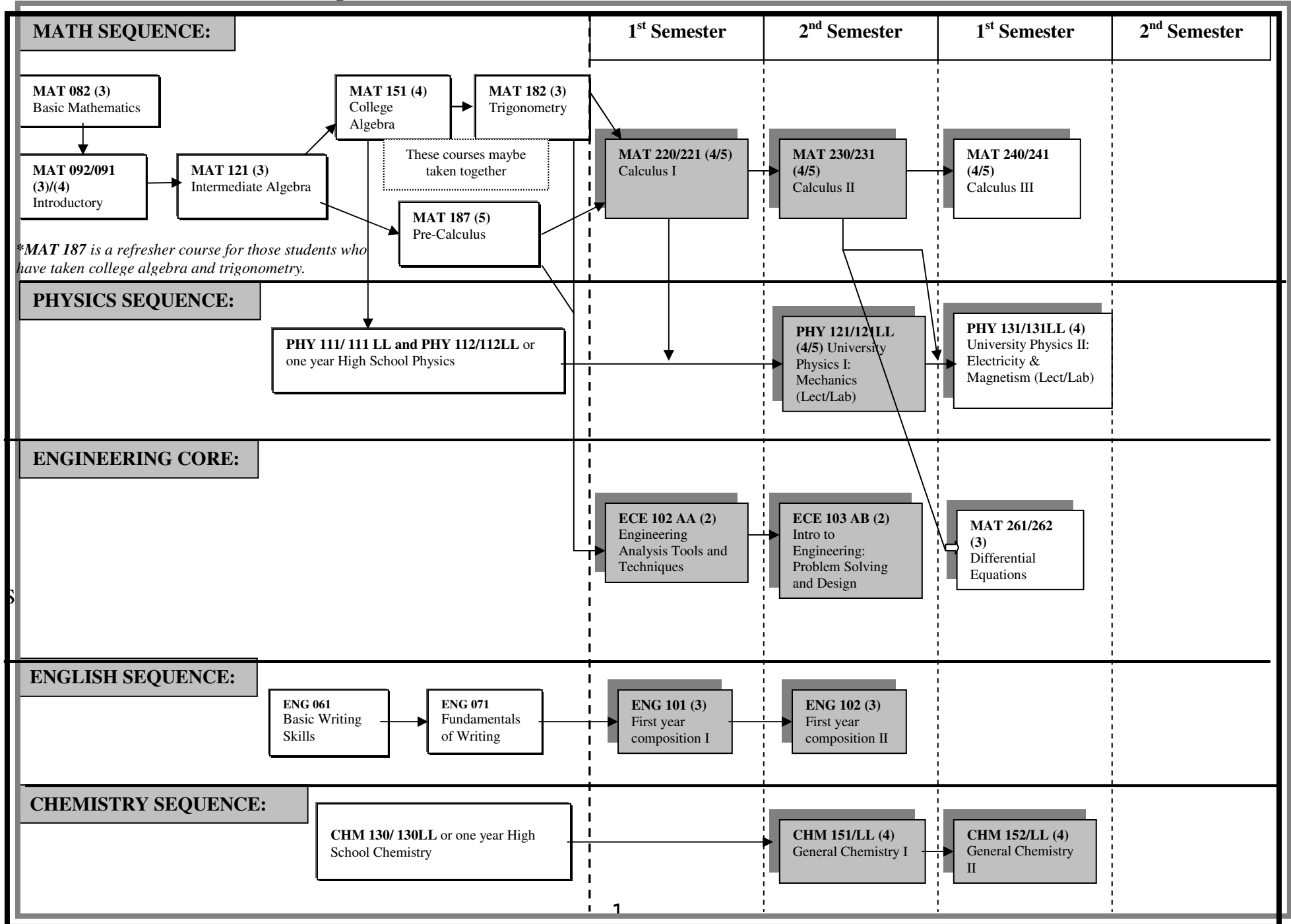


ENGINEERING ASSESSMENTS AND COURSE SEQUENCE

UNDECIDED ENGINEERING

Prerequisite Courses

Required Courses



Undecided Engineering Recommended Study Plan

Year 1		Year 2	
First Semester	Second Semester	Third Semester	Fourth Semester
ECE102 AA (2) Engineering Analysis 1	ECE 103 AB (2) Problem Solving & Design	MAT 261 (3) Differential Equation <u>MAT230</u> MAT275 (3)	
ECE102 (2) AND ECE103 (2)= MAE 100 (2)			
MAT 220 (4) Calc 1 <u>Mat 187 or MAT182</u> MAT 265 (3)	MAT 230 (4) Calc 2 <u>MAT 220</u> MAT 266 (3)	MAT 240 (4) Calc 3 <u>MAT 220</u> MAT267 (4)	
ENG 101 (3) First Year Composition 1 ENG 101 (3)	ENG102 (3) First Year Composition 2 ENG102 (3)	CHM 235/LL (4) General Organic Chemistry CHM 335+lab (4)	
CHM 151/LL (4) General Chemistry 1 <u>HS algebra and HS chemistry</u>	CHM 152/LL (4) General Chemistry 2 <u>CHM 151/LL</u>	PHY 131 (4) University Physics 2 <u>PHY 121, MAT 230</u> PHY131 (4)	
CHM151 (4)+CHM152(4) = CHM 114 or CHM 116 (4)			
HU/SB (3)	PHY 121 (4) University Physics 1 <u>MAT 220</u> PHY 121 (4)	HU/SB (3)	
16	17	18	

Underlined = Pre-req *Italic* = ASU Equivalence

According to ASU Engineering department:
Humanities & Social Sciences (HU/SB) (15 hrs minimum) (Required: 1 course upper division; 2 courses from the same dept; 2 depts. or more Represented; plus a minimum of two courses that satisfy three awareness areas: Cultural (C), Global (G), and Historical (H). Double counting is permissible between HU or SB and the awareness areas and also within the awareness areas.)

Chandler Gilbert Community College

ENGINEERING PROGRAM DIVISION OF SCIENCE

Bassam Matar

480-732-7139

B.Matar@cgmail.maricopa.edu

Arizona State University

ECG 202

Phone: (480) 965-3313